

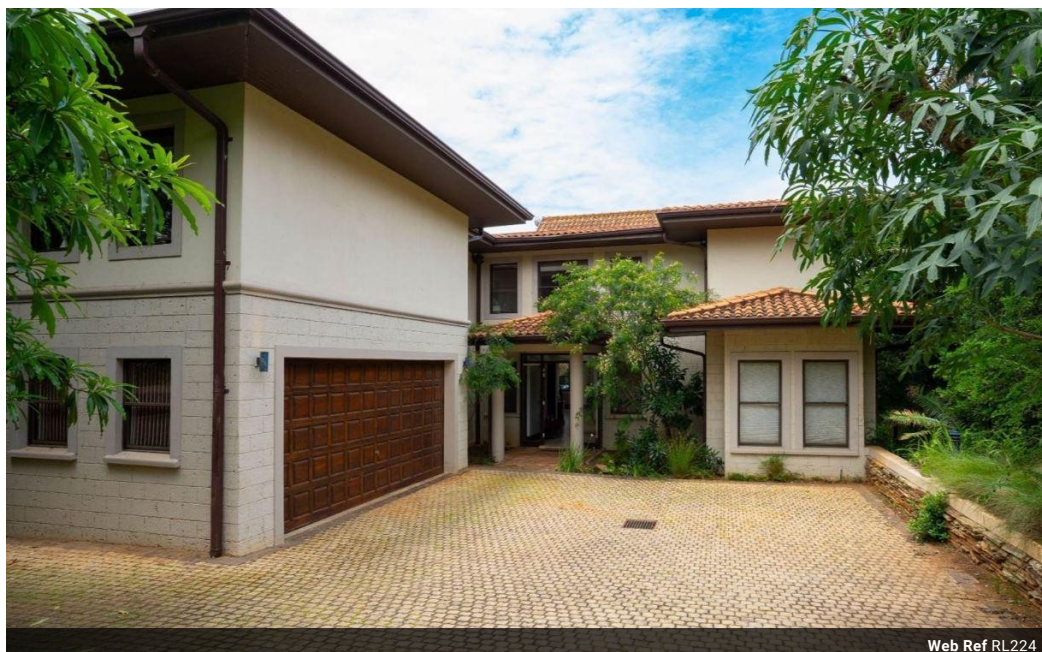


Manuella Botha
083 415 0177
manuella.botha@everitt.co.za

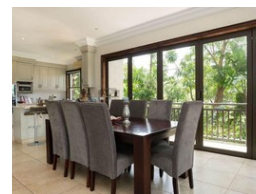
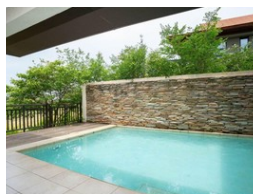
Contact Head Office

083 415 0177

5 Kauai
Tinderwood Close
Zimbali



Web Ref RL224



R10,950,000

4 4.5 2

Monthly Bond Repayment R113,024.63
Calculated over 20 years at 11% with no deposit.

Transfer Costs R1,091,327.00 **Bond Costs** R89,535.00
These calculations are only a guide. Please ask your conveyancer for exact calculations.

Monthly Levy R3,670 **Monthly Rates** R4,503

ELEGANT LIVING AND COMFORT

Superbly situated and private fairway fronting home at the end of a quiet cul-de-sac with surrounding greenbelt. The entrance to the house sets the scene and shows off the magnificent fairway views that this home has. There are versatile rooms and spaces in the home from formal lounge area, TV lounge, private lounge in master bedroom and private study or home office. The light filled kitchen with scullery, open onto the dining room and living area. The pool privately situated off the formal lounge. This prestigious home is the perfect balance between elegant living and welcoming every comfort.

Zimbali Coastal Resort beachfront resort with diplomatic levels security and world-class recreation and hospitality facilities, all available to the prospective, proud new owner. Full access to all the amazing amenities of Zimbali...

Features

Interior		Exterior		Sizes	
Bedrooms	4	Garages	2	Floor Size	500m ²
Bathrooms	4.5	Security	Yes	Land Size	1,012m ²
Kitchens	1	Pool	Yes		
Recep. Rooms	3				
Studies	1				
Furnished	No				

