



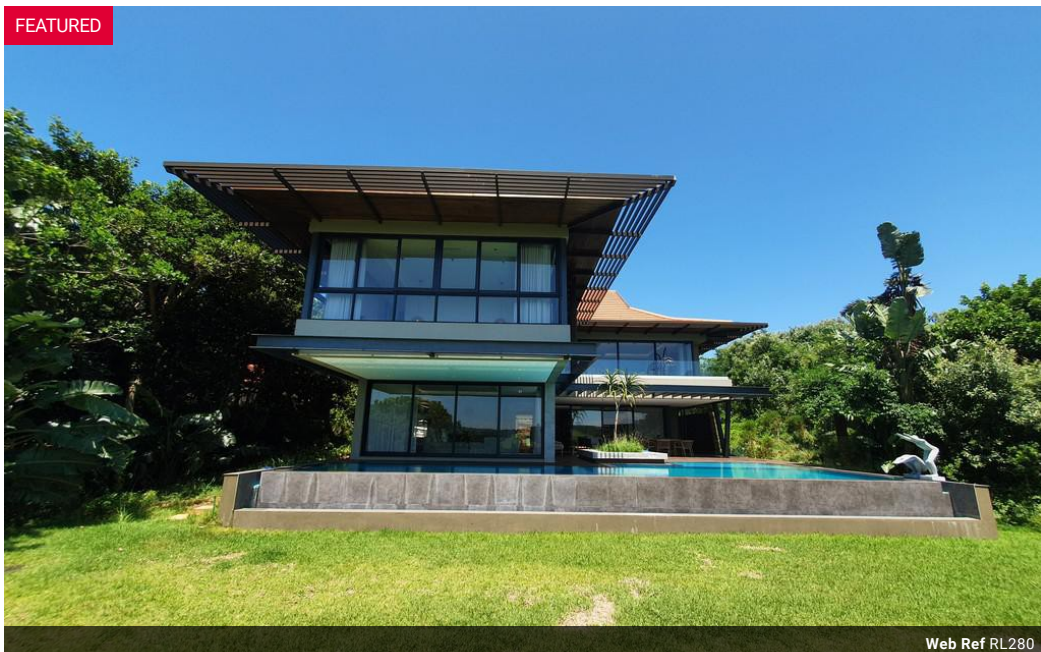
**Manuella Botha**  
083 415 0177  
manuella.botha@everitt.co.za

Contact Head Office

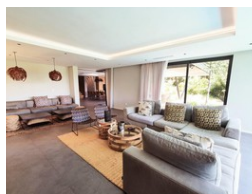
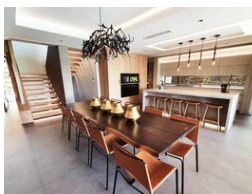
083 415 0177

5 Kauai  
Tinderwood Close  
Zimbali

FEATURED



Web Ref RL280



**R22,000,000**

5 5 2

**Monthly Bond Repayment** R227,081.45  
Calculated over 20 years at 11% with no deposit.

**Transfer Costs** R2,532,371.00 **Bond Costs** R132,285.00  
These calculations are only a guide. Please ask your conveyancer for exact calculations.

**Monthly Levy** R3,670 **Monthly Rates** R4,926

CONTEMPORARY AND STYLISH - LUXURY LIVING IN ZIMBALI COASTAL ESTATE

The position and sheer size of this home set in the heart of Zimbali Coastal Estate and Resort with panoramic views of the Fairway and Zimbali, is uncompromising and simply breathtaking. Renowned architect designed home - where every element has been fastidiously thought through and exceptionally implemented, the finest in design and modern materials combined. Flawless symmetry and all-encompassing glass design transcend onto an elevated North Facing pool, allowing for all year-round entertainment and enjoyment. The separate scullery and contemporary pantry room are as beautiful as they are functional. The focus is on entertainment with an expansive kitchen overlooking extravagant living and entertainment areas, finished with taste, elegance, and great attention to detail. The first floor is perfect for entertaining with the...

Features

Interior		Exterior		Sizes	
Bedrooms	5	Garages	2	Floor Size	720m <sup>2</sup>
Bathrooms	5	Security	Yes	Land Size	1,304m <sup>2</sup>
Kitchens	1	Pool	Yes		
Recep. Rooms	3				
Furnished	No				

**Extras**  
Private Garden Walk-in Closet Private Pool

